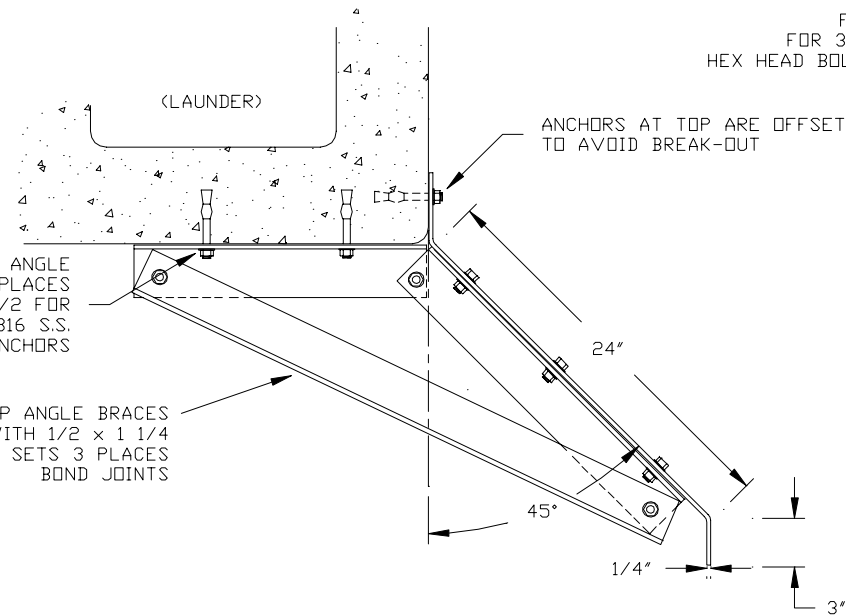


MOLD-IN PILOT DIMPLES
6 PLACES IN BAFFLE.
AFTER BRACES INSTALLED,
LOCATE BAFFLE SO DIMPLES
ARE OVER 45° ANGLE ON BRACE.
FIELD-DRILL 7/16 AT DIMPLES
FOR 3/8 x 1 1/4 - 316 S.S.
HEX HEAD BOLTS, NUTS & WASHERS.

SHOP-DRILL 7/16 - 3 PLACES
IN FAR END OF BAFFLE

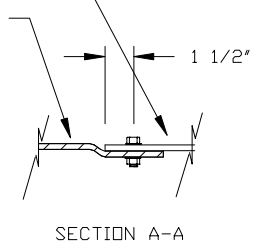
MOLDED FIBERGLASS-REINFORCED POLYESTER RESIN
COMPOSITE LAMINATE, MINIMUM 3/16 INCH WALL THICKNESS,
WITH A MINIMUM 20mil THICK GEL COAT EACH SURFACE.
TOP AND BOTTOM FLANGE TO BE MINIMUM 1/4 INCH THICK.


FIELD-DRILL UNDERLAP
FOR 3/8 x 1 1/4 - 316 S.S.
HEX HEAD BOLTS, NUTS & WASHERS.



SHOP-SLOT TOP ANGLE
LONGITUDINALLY 2 PLACES
7/16 x 1 1/2 FOR
3/8 x 3 3/4 - 316 S.S.
WEDGE ANCHORS

3 x 3 x 1/4 FRP ANGLE BRACES
SHOP ASSEMBLE WITH 1/2 x 1 1/4
316 S.S. BOLT SETS 3 PLACES
BOND JOINTS



"DENSITY CURRENT" or "STAMFORD" BAFFLE	
TYPICAL DETAILS FOR CANTILEVERED LAUNDR	
	WARMINSTER FIBERGLASS