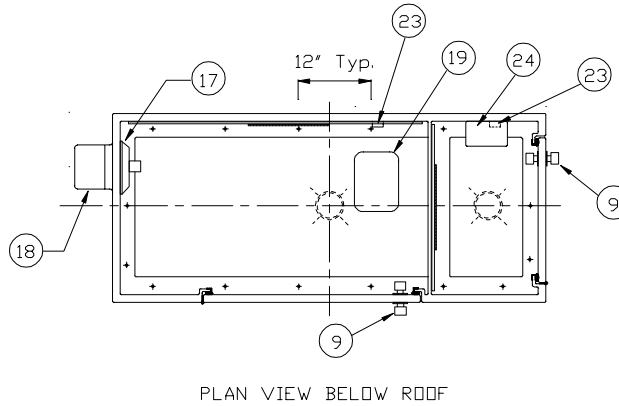
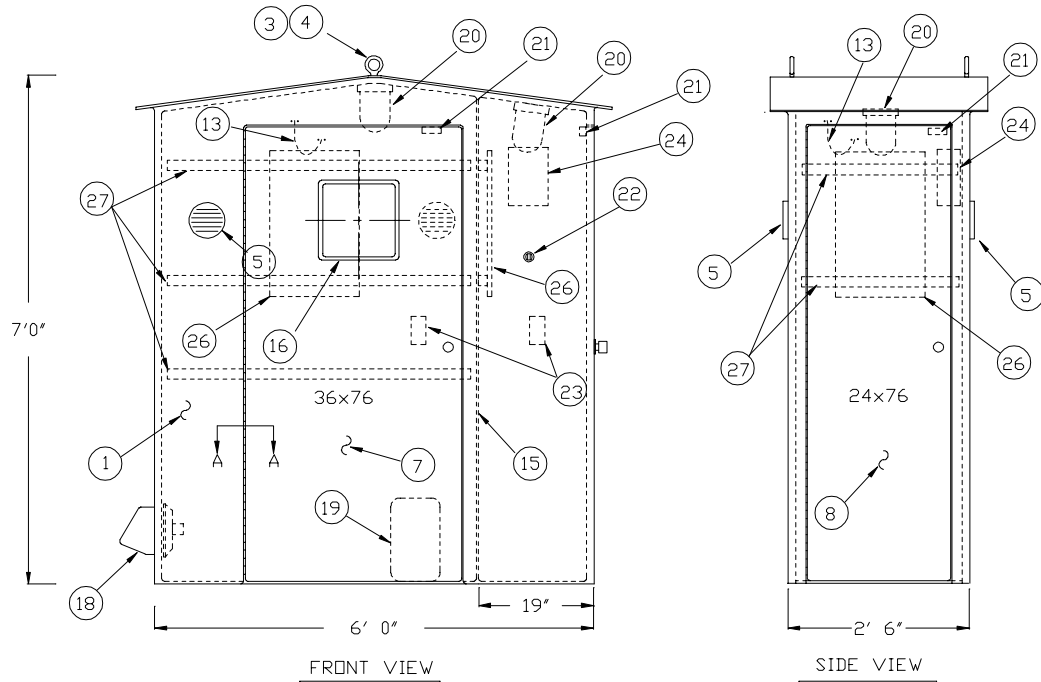
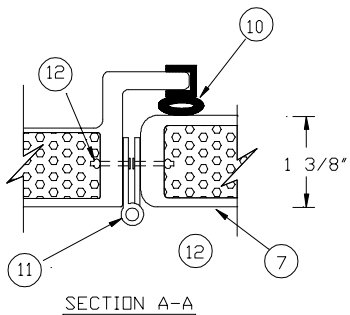
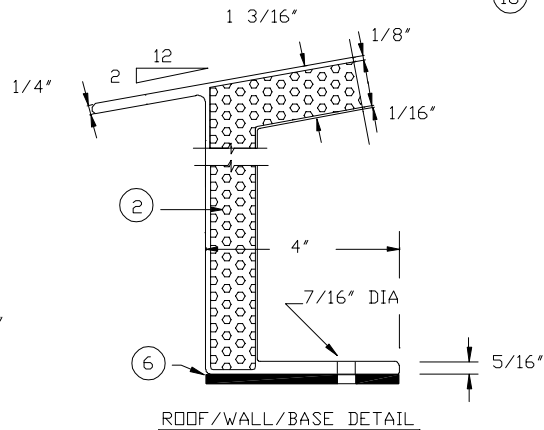
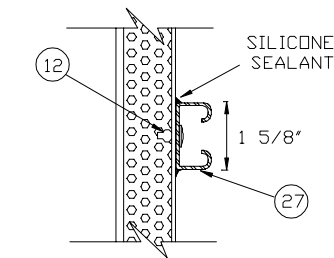


| BILL OF MATERIAL | | |
|-----------------------------------|------|---|
| ITEM | QTY. | DESCRIPTION |
| 1 | 1 | SHELTER - ONE PIECE MOLDED FIBERGLASS - WHITE |
| 2 | A.R. | INSULATION - 1" RIGID POLYISOCYANURATE FOAM |
| 3 | 2 | LIFTING EYE BOLT - CADMIUM PLATED - REMOVABLE |
| 4 | 2 | LIFTING BOLT SUPPORT PLATE - STEEL - ENCAPSULATED |
| 5 | 2 | LOUVRE - 6" PVC w/ SCREEN - MANUALLY ADJUSTABLE |
| 6 | A.R. | FLOOR GASKET - 4"x 1/4" NEOPRENE SPONGE |
| 7 | 1 | DOOR - 36"x 76" - RTM MOLDED FIBERGLASS - SMOOTH BOTH SIDES |
| 8 | 1 | DOOR - 24"x 76" - RTM MOLDED FIBERGLASS - SMOOTH BOTH SIDES |
| 9 | 2 | DOOR ENTRANCE LOCKSET- US32D - S.S. - w/ KEYS |
| 10 | A.R. | DOOR GASKET - HOLLOW "P" NEOPRENE SPONGE |
| 11 | 2 | DOOR HINGE - 2" SS OPEN PIANO TYPE |
| 12 | A.R. | FASTENERS - POP RIVETS |
| 13 | 2 | DOOR STOP - CHAIN & SPRING ASSEMBLY - PLATED |
| 14 | A.R. | DOOR & FRAME REINFORCEMENT - ENCAPSULATED (NOT SHOWN) |
| 15 | 1 | PARTITION - GAS TIGHT - FIBERGLASS |
| 16 | 1 | DOOR WINDOW - SAFETY GLASS 12"x 12"x 1/4" w/ GASKET |
| 17 | 1 | EXHAUST FAN - 120 CFM w/ SHUTTER |
| 18 | 1 | EXHAUST FAN CANOPY - FIBERGLASS w/ SCREEN |
| 19 | 1 | HEATER - 1500 WATTS w/ THERMOSTAT |
| 20 | 2 | LAMP - VAPOR TIGHT w/ GLOBE & GUARD |
| 21 | 2 | MICROSWITCH - FAN & LIGHT - DOOR OPERATED |
| 22 | 1 | SELECTOR SWITCH - AUTO/MANUAL - LIGHT & FAN |
| 23 | 2 | DUPLEX OUTLET |
| 24 | 1 | DUPLEX FUSE BOX - 2 POLE, 30 AMP |
| 25 | A.R. | WIRING IN 1/2" FLEXIBLE LIQUID-TIGHT PVC CONDUIT |
| 26 | 2 | SUB-PANEL - FIBERGLASS 21"x 15"x 1/4" |
| 27 | 5 | MOUNTING CHANNEL - GALV. STEEL POWER STRUT #PS-500 |
| 28 | 2 | SAFETY CHAIN FOR CHLORINE CYLINDER |
| ITEMS NOT SHOWN: 4, 14, 25 AND 28 | | |



NOTE: OTHER SIZES, COLORS AND OPTIONS ARE AVAILABLE.



| | |
|---|-----------------------|
| MODEL WFS102C CHLORINATION SHELTER | |
| 2 COMPARTMENT - WITH MOST POPULAR OPTIONS | |
|  | WARMINSTER FIBERGLASS |