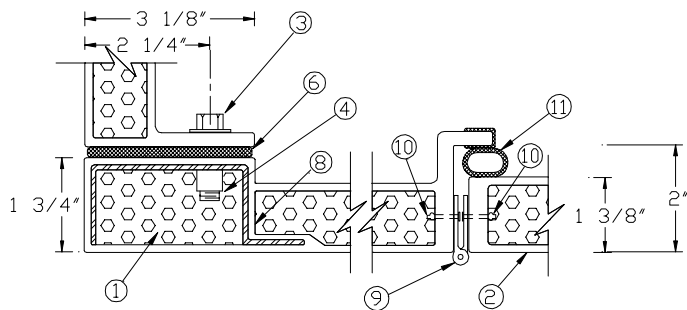
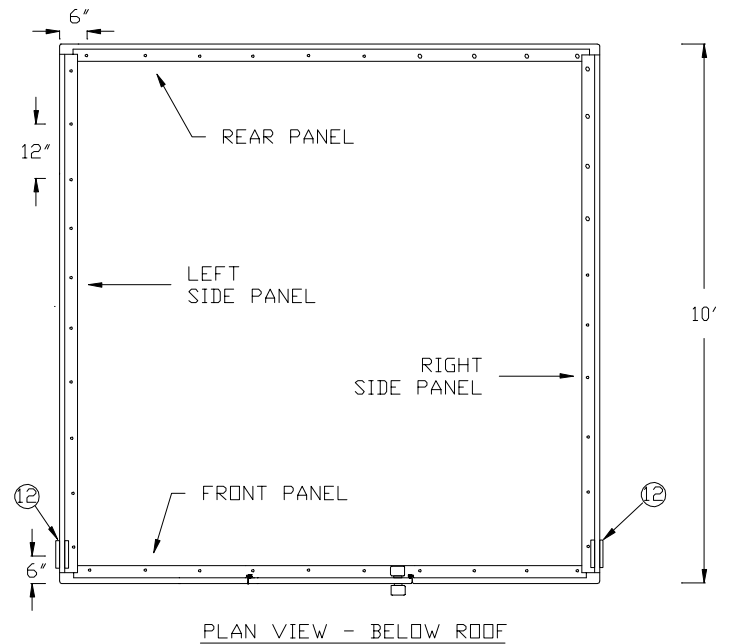
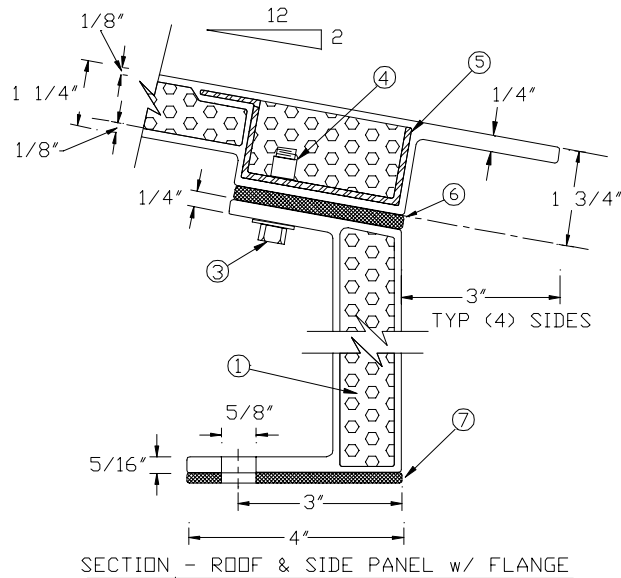
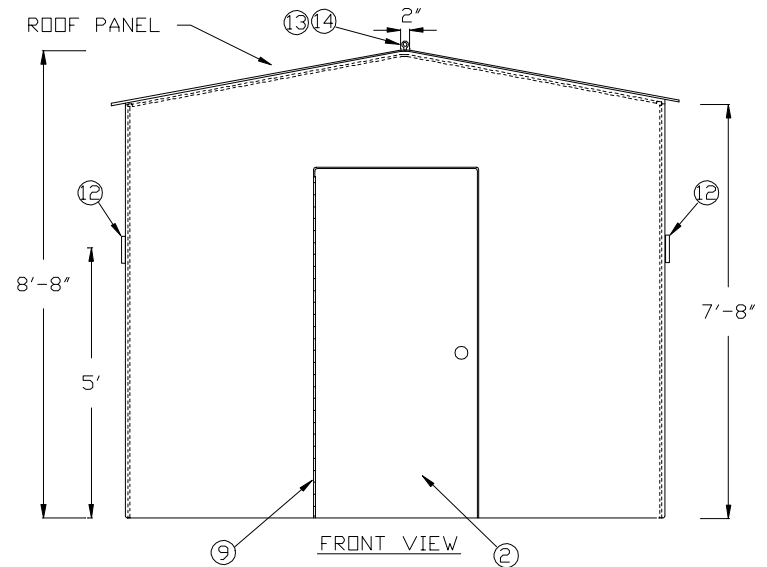


ITEM	DESCRIPTION
1	CORE, RIDGID CLOSED CELL, SELF-EXTINGUISHING POLYISOCYANURATE
2	DOOR, RTM MOLDED FIBERGLASS, 36" x 78" SMOOTH GEL-COAT BOTH SIDES
3	HEX HEAD BOLT, S.S., 3/8x 1 1/4, w/WASHER
4	NUTSERTS, 3/8 - 16 NC, WIDE-FLANGE ALUMINUM
5	ROOF PANEL ALUMINUM EXTRUSION
6	JOINT GASKET, 3x 1/4 POLYURETHANE SPONGE
7	FLOOR GASKET, 4x 1/4 NEOPRENE SPONGE
8	FRONT & BACK PANEL ALUMINUM EXTRUSION
9	DOOR HINGE, S.S., 2 1/2" OPEN PIANO TYPE
10	FASTENER, POP RIVET
11	DOOR GASKET, NEOPRENE HOLLOW BULB TRIM SEAL
12	LOUVRE, 6" DIA PVC W/SCREEN, ADJUSTABLE
13	LIFTING EYEBOLT - 3/4 - 10 CADMIUM PLATED
14	EYEBOLT SUPPORT, ST 6x2x1, ENCAPSULATED



MODEL WFS1010-10 FIBERGLASS SHELTER



WARMINSTER FIBERGLASS